



Truck & Van

Truck & Van

**Automotive Weather Seals
and Detail Rubber Parts**



**The Most Advanced OEM Replacement
Weatherstrip You Can Buy !!!**

Why buy SUPERsoft®-brand Weatherstrip?

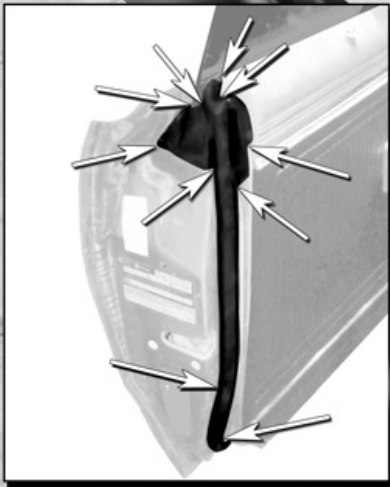
... because it's made better



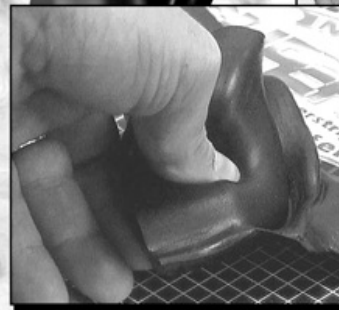
... because it tests and feels softer



... because it fits better



... because it looks better



... because it lasts longer



Because You Can Trust It!!

Trucks & Vans

In this Catalog ...

Truck & Van Basic Kits

2

Molded Door Seals

4

Roof-rail and Tailgate Seals

12

Vent Window Seals

13

Window Channels & Sweepers

14

Frame & Chassis Parts

18

Body & Interior Parts

21

Miscellaneous Restoration Parts

24

Dear Fellow Enthusiast: As you can see, we have an all-new catalog dedicated exclusively to Trucks and Vans. Due to the increasing demand for replacement and restoration parts for these vehicles, we thought it best to start issuing new catalogs dedicated to makes and models to help our distributors and end-users find the restoration parts they want and need. Additionally, we have a large offering of rubber parts for Trucks and Vans and want to ensure that you have the information you need at your fingertips. If you want to know the parts we offer for specific model years, please visit our website at www.metromp.com. There you can create and print-out a custom catalog for any model truck or van you are working on and instantly know exactly what is available from Metro Moulded Parts, Inc.! In addition to this parts catalog for Trucks and Vans, we are working on numerous others that will support the most popular automotive lines in the restoration marketplace. Please contact your Customer Service representative to request catalogs for other models or to ask about new part offerings.

Don't let anyone tell you there's no difference in rubber parts! Here at Metro, we continue to work hard to make our premium quality OEM reproduction and restoration parts the very best available by paying careful attention to the smallest details. Compare our products before buying any other brand! We're sure you'll find our parts give you the best overall value when you compare softness, appearance, fit, performance, durability and warranty. Attention to quality and detail are what we call "The Visible Difference." Prove it to yourself by comparing brands. We welcome the challenge!

To all of you who helped make Metro Moulded Parts, Inc. the leading supplier of restoration rubber products, our sincerest

Thanks!!

Truck & Van Basic Kits!

Our basic kits include the vital pieces of weatherstripping you need to get your restoration or repairs started right! Kit prices are typically about 10% less than the individual sets of parts they contain. The same high quality Metro parts are used in all our basic weatherstrip kits and carry the same "no hassle", 15-year full replacement warranty and 100% satisfaction guarantee!

Basic kits contain the "dynamic seals" that seal the major openings in your truck or van to keep out wind and weather. For vans, a basic kit includes the cab, side-cargo or side-slider, and rear-cargo door seals. Metro Moulded Parts, Inc. makes thousands of additional detail rubber parts for hundreds of different makes and models of cars and trucks. If you don't see what you are looking for, just give us a call. The parts you need might be available and ready to ship the same day you order!



RKB 1900-103

CHEVY/GMC BASIC KITS

- | | | |
|---------|--|---------------------|
| '73-'77 | El Camino, Caballero. Basic kit. Utility hardtop. Door and roof-rail seals. 4-piece set. Kit. | RKB 1900-113 |
| '78-'87 | El Camino, Caballero. Basic kit. Utility hardtop. Door and roof-rail seals. 4-piece set. Kit. | RKB 1900-103 |
| '78-'96 | Chevrolet/GMC G10-G30, G15-G35, G1500-G3500 vans. Basic kit. Fits models with sliding side doors. Front cab doors, side slider and rear cargo seals. 6-piece set. Kit. | RKB 1300-100 |
| '78-'96 | Chevrolet/GMC G10-G30, G15-G35, G1500-G3500, P20-P30 ('78-'94), P15-P3500 ('78-'94) vans. Basic kit. Fits models with side cargo doors. Front cab doors, side cargo and rear cargo seals. 6-piece set. Kit. | RKB 1300-101 |



RKB 1900-113



RKB 1300-100



RKB 1300-101

FORD BASIC KITS

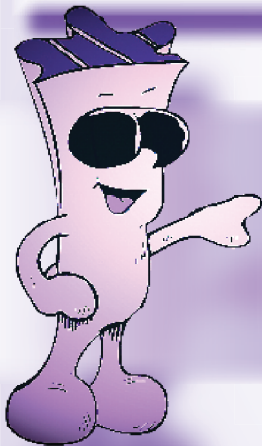
'75-'91	E100 ('75-'83), E150-E350. Basic Kit. Fits models with side sliding door. Front cab, side slider and rear cargo seals. 5-piece set. Kit.	RKB 3000-100
'75-'91	E100 ('75-'83), E150-E350. Basic Kit. Fits models with side cargo doors. Front cab, side cargo and rear cargo seals. 6-piece set. Kit.	RKB 3000-101



RKB 3000-100



RKB 3000-101



"Our basic kits typically cost about 10% less than the individual parts they contain. It's your best choice when replacing all the main seals!"

Insist on Metro Quality!



**Ask for Metro
by Name!**

At Metro we believe that quality parts go beyond 'just working.' We formulate rubber to meet the requirements of the part, instead of using cheap, commodity bulk rubber for all applications. Our standards include coated, molded-in steel cores, correct tool-installed clips and beautifully detailed outer surfaces. We even re-create details from the original parts that won't be seen once the part is installed! All of our standards are necessary to provide you with show-quality results. Don't settle for less! Find out what you are getting for your money and ASK FOR METRO QUALITY. You'll be glad you did. **There Truly is a Visible Difference ...**



“No Slam” Molded Door Seals

No seal on a truck or van has to stand up to harder use than the door seals, particularly if your's is a work vehicle. You're probably in and out of it several times a day. With high frequency of use, a door seal will wear out faster, be damaged easier, or simply become compressed quicker due to repeated slamming. When it begins to fail, you may only notice an annoying wind whistle or some water intrusion when it rains. But if you are having trouble keeping your van or truck warm in the winter and cool in the summer, the problem may not be with your heater or air conditioner. A 1/8 in. gap in a door seal along 14 feet of sealing surface is equivalent to having a 20 square-inch hole in your door. If all the seals on your truck or van are bad, the problem is multiplied. In high demand utility vehicles, even the best seals should be replaced every 3-4 years due to simple wear and tear.

CHEVY/GMC DOOR SEALS

'47-'55	Pickup. 1st Series. Door seals. Pair. R&L.	LM 13-E
'55-'59	Pickup. 2nd Series. Door seals. Pair. R&L.	LM 13-D
'60-'63	C10-C30, K10-K20, Chevy Pickup ('60). Door seals. Includes auxiliary top door seals. Pair. R&L.	LM 13-F
'64-'66	C10-C30, K10-K20, 1000-1500 Series ('64-'65), C15-C2500 ('66), K15-K2500 ('66). Door seals. Pair. R&L.	LM 13-G
'67-'72	C10-C30, K10-K20, K30 ('68-'72), C15-C3500, K15-K3500 ('66). Door seals. Pair. R&L.	LM 13-H
'69-'72	Blazer, Jimmy ('70-'72). Molded door seals. With one molded end. Pair. R&L.	LM 24
'73-'91	Blazer, C10-C30 ('73-'86), C15-C3500 ('73-'86), Jimmy, K10-K30 ('73-'86), K15-K3500 ('73-'86), R10-R30 ('87-'88), R1500-R3500 ('87-'91), V10-V30 ('87-'88), V1500-V3500 ('87-'91). Front door seal. Imported. For pickup and Suburban. Fits front or rear, either side. 148 in. long. Each.	IS-LM 121
'73-'94	Blazer ('83-'94), Jimmy, S10, S15 pickup ('82-'90), Safari ('85-'87), Sonoma S15 ('82-'93). Door seal. Domestic. Front or rear, either side. Each.	MW00100
'73-'94	Blazer ('83-'94), Jimmy, S10, S15 pickup ('82-'90), Safari ('85-'87), Sonoma S15 ('82-'93). Door seal. Imported. Front or rear, either side. Each.	IS-MW00100
'81-'90	C10-C20 ('80-'86), C15-C2500 ('80-'86), K10-K20 ('80-'86), K15-K2500 ('80-'86), R10-R20 ('87-'88), R1500-R2500 ('89-'91), V10-V20 ('87-'88), V1500-V2500 ('89-'91) Suburban. Driver's side (left) rear cargo door seal. Replaces OEM# 9764130. Each.	LM 121-M
'81-'90	C10-C20 ('80-'86), C15-C2500 ('80-'86), K10-K20 ('80-'86), K15-K2500 ('80-'86), R10-R20 ('87-'88), R1500-R2500 ('89-'91), V10-V20 ('87-'88), V1500-V2500 ('89-'91) Suburban. Passenger's side (right) rear cargo door seal. Replaces OEM# 9764131. Each.	LM 121-N
'92-'02	Blazer ('92-'94), C1500-C3500 ('88-'00), K1500-K3500 ('88-'00), Sierra ('00-'02), Silverado ('00-'02), Tahoe ('95-'98), Yukon ('92-'98). Door seal. Imported. Fits pickup and Suburban. Front or rear, either side. 163 in. long. Each.	IS-LM 101-T
'95-'05	Blazer, Jimmy, Bravada, Envoy, S10/Sonoma pickups ('94-'04). Front door seal. Fits either side. Each.	LM 120-T
'95-'05	Blazer, Jimmy, Bravada, Envoy, S10/Sonoma pickups ('01-'04). Rear door seal. Imported. Fits either side. Each.	IS-LM 120-U



IS-MW00100

MW00100



IS-LM 101-T



IS-LM 120-U



IS-LM 121



LM 13-D



LM 13-E



LM 13-F



LM 13-G, -H



LM 24



LM 120-T



LM 121-M



LM 121-N

CHEVY/GMC DOOR SEALS (Cont).



LM 13-V



LM 13-VC



LM 13-VR



LM 13-VS



LM 100-VS

'74-'96	G10-G30, G15-G3500 vans. Side sliding door seal. Fits full-size models (1996 early design). Each.	LM 13-VS
'78-'96	G10-G30, G15-G3500 vans. Front door seals. Correct pins, correctly positioned. Fits full-size models (1996 early design). Pair. R&L.	LM 13-V
'78-'96	G10-G30, G15-G3500 vans. Molded side cargo door seals. Correct pins, correctly positioned. Fits full-size models (1996 early design). Includes front and rear seals. Pair. R&L.	LM 13-VC
'78-'96	G10-G30, G15-G3500 vans. Molded side cargo door seal. Front only. Correct pins, correctly positioned. Fits full-size models (1996 early design). Each.	LM 13-VCF
'78-'96	G10-G30, G15-G3500 vans. Molded side cargo door seal. Rear only. Correct pins, correctly positioned. Fits full-size models (1996 early design). Each.	LM 13-VCR
'78-'96	G10-G30, G15-G3500 vans. Molded rear cargo door seals. Correct pins, correctly positioned. Fits full-size models (1996 early design). Pair. R&L.	LM 13-VR
'85-'96	Astro, Safari vans. Side sliding door seal. Each.	LM 100-VS

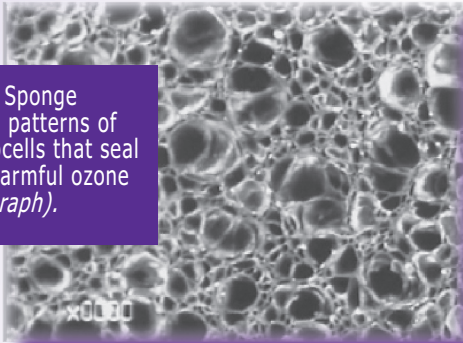
Questions? Ask for Technical Assistance ...

We'll be glad to help! 1-800-878-2237

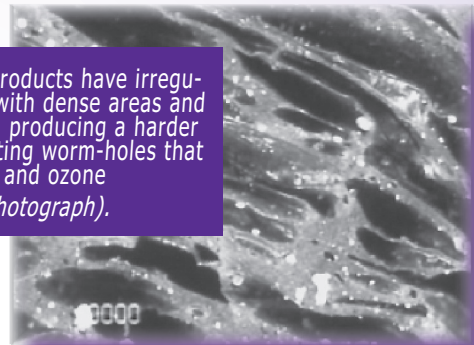
The Quality is in the Details!!!

Metro SUPERsoft® brand Sponge Rubber has a uniform, closed-cell microstructure that forms an outer skin free from exposed cells and flaws. Unlike competitors' products that are coated with an outer latex skin, SUPERsoft® brand Sponge Rubber seals won't bruise, gall, blister, glaze, crack or peel.

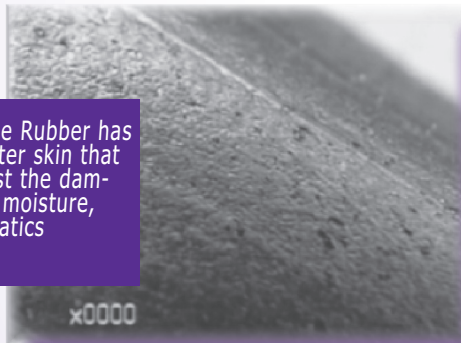
SUPERsoft® brand Sponge Rubber has regular patterns of self-enclosed microcells that seal out moisture and harmful ozone (100x microphotograph).



Competitive products have irregular structure with dense areas and open areas ... producing a harder seal and creating worm-holes that trap moisture and ozone (100x microphotograph).



SUPERsoft® brand Sponge Rubber has an integrated, smooth outer skin that is the first defense against the damaging effects of UV light, moisture, ozone and chemical aromatics (50x microphotograph).

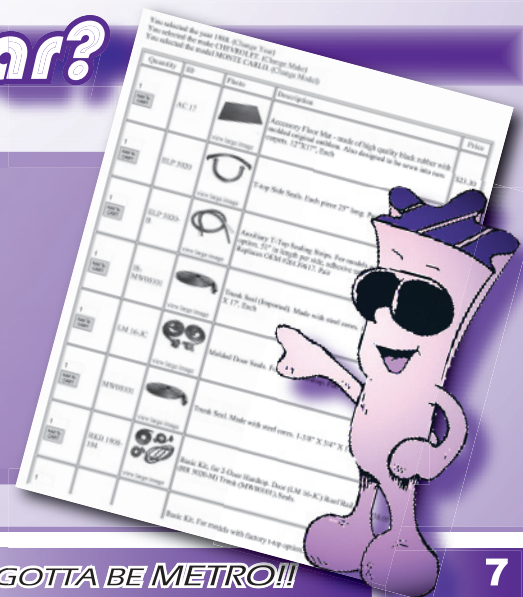


Competitive products have skin with shingles and surface tears that provide paths for moisture and gases to penetrate (50x microphotograph).



Working on a Different Car?

Get a free **Custom Catalog** of Metro parts for any vehicle we support by visiting our website at www.metrommp.com and clicking on "Search For Parts." Or call us and we'll print one for you and mail it free.



FORD DOOR SEALS

'66-'67	Bronco. Door seals. Pair. R&L.	LM 11-B
'67-'72	F-150, F-250, F-350. Door seal. Fits either side. Each.	LM 110-B
'73-'79	Bronco ('78-'79), F-100, F-150 ('75-'79), F-250, F-350. Door seal. Fits either side. Each.	LM 110-A
'75-'91	Econoline E-100 ('75-'83), E-150, E-250, E-350 vans. Front side cargo door seal. Fits front (right) side of cargo door. Replaces OEM# E9UZ-1525324-B. Use with left side matching seal, LM 110-VB. Each.	LM 110-VA
'75-'91	Econoline E-100 ('75-'83), E-150, E-250, E-350 vans. Rear side cargo door seal. Fits rear (left) side of cargo door. Replaces OEM# E9UZ-1525325-B. Use with right side matching seal, LM 110-VA. Each.	LM 110-VB
'75-'91	Econoline E-100 ('75-'83), E-150, E-250, E-350 vans. Left front (driver's side) cab door seal. Use with LM 110-VR. Each.	LM 110-VL
'75-'91	Econoline E-100 ('75-'83), E-150, E-250, E-350 vans. Right front (passenger's side) cab door seal. Use with LM 110-VL. Each.	LM 110-VR
'75-'91	Econoline E-100 ('75-'83), E-150, E-250, E-350 vans. Side sliding door seal. Each.	LM 110-VS
'75-'91	Econoline E-100 ('75-'83), E-150, E-250, E-350 vans. Left rear cargo door seal. Fits left side of rear cargo doors. Replaces OEM# E9UZ-1543723-A. Use with right side matching seal, LM 110-VU. Each.	LM 110-VT
'75-'91	Econoline E-100 ('75-'83), E-150, E-250, E-350 vans. Right rear cargo door seal. Fits right side of rear cargo doors. Replaces OEM# F0UZ-1543722-A. Use with left side matching seal, LM 110-VT. Each.	LM 110-VU
'80-'97	Bronco ('80-'96), F-100 ('80-'83), F-150 - F-450. Door seals. Pair. R&L.	IS-LM 110
'83-'92	Bronco II ('84-'90), Ranger. Door seal. Fits either side. Each.	LM 110-T
'91-'00	Explorer, Mountaineer ('97-'00). Door seal. 2-door models. Fits either side. Each.	LM 112
'91-'00	Explorer, Mountaineer ('97-'00). Front door seal. 4-door models. Fits either side. Each.	LM 113
'91-'00	Explorer, Mountaineer ('97-'00). Rear door seal. 4-door models. Fits either side. Each.	LM 114
'97-'03	F-150, F-250 ('97-'99). Door seal. Imported. Fits driver's (left) side door. Each.	IS-LM 110-C
'97-'03	F-150, F-250 ('97-'99). Door seal. Imported. Fits passenger's (right) side door. Does not fit any extended cab models. Each.	IS-LM 110-D



Fast Fact: *Some manufacturers design their parts to cover as wide a range of years and as many different models as possible. Others make parts from second- and third-generation copies. At Metro, we know that even minor differences can add up to big headaches when you go to install a part. In our opinion, close enough is NOT good enough! That's why, whenever possible, we design parts from original stock and prove the fit by installing them on the actual vehicle they were designed for. It's just part of our commitment to provide you with the very best rubber parts available. Get the facts and you'll find out ... **there Truly is a Visible Difference!***

Ford Truck & Van Door Seals

 <p>IS-LM 110</p>	 <p>IS-LM 110-C</p>	 <p>IS-LM 110-D</p>	 <p>LM 11-B</p>
 <p>LM 110-A</p>	 <p>LM 110-B</p>	 <p>LM 110-VA</p>	 <p>LM 110-VB</p>
 <p>LM 110-VL</p>		 <p>LM 110-VR</p>	
 <p>LM 110-VS</p>	 <p>LM 110-VT</p>	 <p>LM 110-VU</p>	 <p>LM 110-T</p>
 <p>LM 112</p>	 <p>LM 113</p>	 <p>LM 114</p>	

Quality and Craftsmanship since 1918!

DATSUN/NISSAN DOOR SEALS

Exact-fit, door seals with proper clips correctly spaced and mitered ends.

- '72-'79 **620 pickup.** Door seals. Pair. R&L. **LM 130**
- '80-'86 **720 pickup.** Door seals. Pair. R&L. **LM 131**
- '86-'95 **D21 pickup ('86-'93), Pathfinder ('87-'95), pickup ('94-'95).** Door seals. Pair. R&L. **LM 132**



LM 130

LM 131

LM 132

LM 132

LM 136



TOYOTA DOOR SEALS

- '72-'78 **Toyota Pickup.** Door seals. Pair. R&L. **LM 133**
- '80-'86 **Toyota Pickup, 4Runner.** Door seals. Pair. R&L. **LM 136**

Most Items Ship the Same Day!

Manufacturing and sales take place at our central facility in Minneapolis, Minnesota. From a well-stocked warehouse to computer processing of your orders, we're committed to providing you with both the highest quality product and complete service support.



DODGE/PLYMOUTH DOOR SEALS

- | | | |
|---------|---|------------------|
| '72-'93 | D-Series and W-Series trucks, Ramcharger ('75-'93). Door seal. Imported. 160 in. long. For full-size models including D50 through D450 and W100 through W350 trucks and Ramcharger. Fits front or rear, either side. Replaces OEM# 55023781. Each. | IS-LM 123 |
| '72-'93 | D-Series and W-Series trucks, Ramcharger ('75-'93). Door seal. Domestic. 160 in. long. For full-size models including D50 through D450 and W100 through W350 trucks and Ramcharger. Fits front or rear, either side. Replaces OEM# 55023781. Each. | LM 123 |
| '74-'97 | B-Series vans. Fits full-size models including B100 through B3500 vans. Driver's side (left) door seal. Each. | LM 123-VL |
| '74-'97 | B-Series vans. Fits full-size models including B100 through B3500 vans. Passenger's side (right) door seal. Each. | LM 123-VR |
| '84-'95 | Caravan, Grand Voyager ('88-'95), Town&Country, Voyager. Side sliding door seal. Each. | LM 102-VS |



LM 102-VS



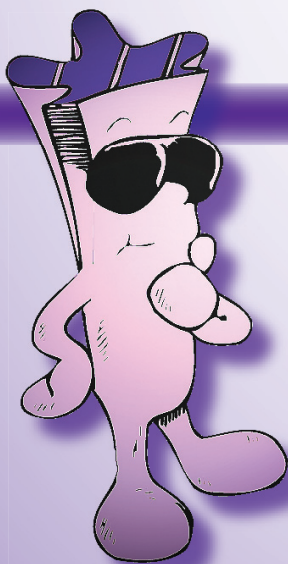
IS-LM 123

LM 123



LM 123-VL

LM 123-VR



Lifetime Warranty? Well ... Maybe

Don't be fooled by claims of "Lifetime Warranty" on the rubber parts you buy! "Lifetime Warranty" is a legal term that defines a period of use set by law that varies by state. It can be as little as three years. Metro SUPERsoft® weatherstrip, seals and detail rubber parts come with a 15-year Full Replacement Guarantee. We promise that if your Metro-made part fails at any time during that time we'll replace it free of charge. That's our "No Hassle" guarantee. Don't settle for a simple promise of satisfaction. Metro's warranty is the best you can get! Bar none!

"Sure-fit" Roof-rail Seals

RR 2200 '73-'75 Chevy Blazer, GMC Jimmy.
Roof-rail seals. For 2-door removable
top. Pair. R&L.



RR 3310 '66-'77 Ford Bronco.
Molded roof-rail seals. Pair. R&L.

Blazer Tailgate Seal



TG 10 '69-'72 Chevy Blazer, '70-'72 GMC
Jimmy. Upper tailgate seal. Each.



*The Visible Difference
is in the Details!*

Chevy/GMC Vent Window Seals

'51-'55	GMC 100/150/250 Series trucks, Chevy pickup. Front vent window seals. Includes vertical division bars. <i>For '55: First Series only. Does not fit Sedan Delivery.</i> Vent seal: 26-1/4 in. long. Division bar seal: 13-3/4 in. long. 4-piece set.	WR 2000
'55-'59	GMC 100/150/250 Series trucks, Chevy pickup. Front vent window seals. Includes vertical division bars. <i>Second Series only.</i> Vent seal: 27 in. long. Division bar seal: 15-3/4 in. long. 4-piece set.	WR 2007
'61-'63	C10-C30, K10-K20 pickup. Vent window seals. Includes division bar seals. <i>Also fits '60 Chevy pickup.</i> Vent seal: 25-1/2 in. long. Division bar seal: 15-3/4 in. long. 4-piece set.	WR 1900
'64-'66	1000-1500 ('64-'65), C10-C30, C15-C2500 ('66), K10-K20, K15-K1500 ('66), P10 pickup. Vent window seals. Includes division bar seals. Vent seal: 26-1/2 in. long. Division bar seal: 15-11/16 in. long. 4-piece set.	WR 2005

If we wouldn't want to put it on our truck or van ...



WR 1900



WR 2000



WR 2005



WR 2007

... we wouldn't want you to put it on yours!

Window Channels & Sweepers


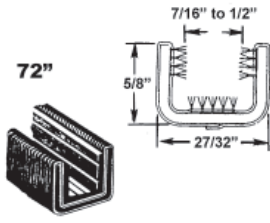
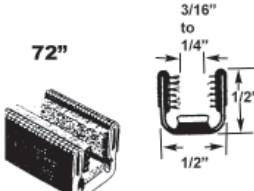
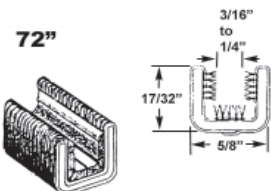
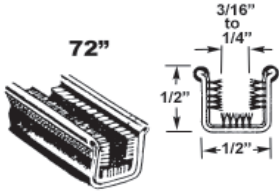

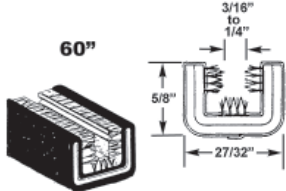





"New sweepers and channels eliminate window rattle and reduce noise!"



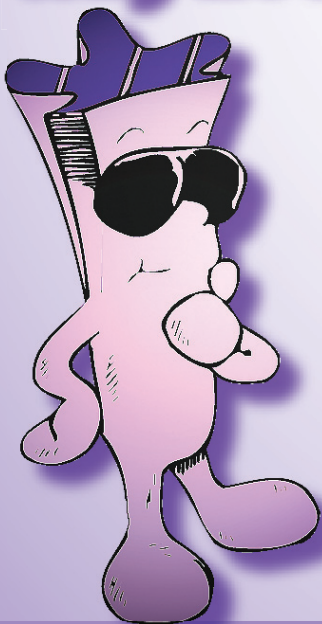
CHEVY/GMC TRUCKS

'33-'62	Chevy/GMC trucks, many models. Flexible glass-run channel. Unbeaded, pile-lined. For models without framed side glass. 72 in. piece. Each.	WC 26-72
'48-'69	Chevy/GMC trucks, many models. Upper and lower rigid division bar channel. Unbeaded, pile-lined. 72 in. piece. Each.	WC 25-72
'50-'63	Chevy/GMC trucks, many models. Flexible glass-run channel. Mohair-lined. For models with framed side glass only. 72 in. piece. Each.	WC 18-72
'55-'59	Chevy pickup. Window sweeper kit. Inner and outer sweepers. 4-piece set.	WC 5900-11
'60-'63	C10-C30, K10-K20, Chevy pickup ('60). Window sweeper kit. Inner and outer sweepers. 4-piece set.	WC 5900-12
'63-'64	C10-C30, K10-K20. Flexible glass run channel. Flocked. For vehicles without framed side glass. 60 in. piece. Each.	WC 40-60
'64-'66	C10-C30, K10-K20. Window sweeper kit. Inner and outer sweepers. 4-piece set.	WC 5900-13
'65-'67	Chevy/GMC trucks, many models. Upper and lower rigid division bar channel. With stainless steel bead, pile lining and heavy steel core. 72 in. piece. Each.	WC 29-72
'65-'67	Chevy/GMC trucks, many models. Flexible glass-run channel. 96 in. piece. Each.	WC 33-96
'67-'72	C10-C30, K10-K30. Window sweeper kit. Inner and outer sweepers. 4-piece set.	WC 5900-10
'69-'72	Blazer, Jimmy. Front side window drain seals. Pair. R&L.	ELP 100
'73-'80	C10-C30, K10-K30. Glass run window channel kit. Partially flocked. Each.	WC 59
'73-'80	Chevy/GMC full-size trucks, Blazer, Jimmy. Window sweeper kit. Inner and outer sweepers. Front doors, partially flocked. 4-piece set.	WC 5900-15
'73-'91	Chevy/GMC full-size trucks, Blazer, Jimmy, Suburban. Window channel and sweeper kit. Glass run channels and inner and outer sweepers. Rear doors. 6-piece set.	WC 5900-18
'73-'91	Chevy/GMC full-size trucks, Blazer, Jimmy, Suburban. Tailgate window sweeper kit. Inner and outer sweepers. 2-piece set.	WC 5900-19
'75-'94	Chevy/GMC full-size trucks and vans. Window channel and sweeper kit. Glass run channels and inner and outer sweepers. 6-piece set.	WC 5900-20
'78-'91	Chevy/GMC full-size trucks and vans. Flocked window channels. Imported. Partially flocked. Pair.	IS-WC 5900-22
'81-'87	Chevy/GMC full-size trucks, Blazer, Jimmy. Window channel and sweeper kit. Glass run channels and inner and outer sweepers. 6-piece set.	WC 5900-16
'81-'91	Chevy/GMC full-size trucks, Blazer, Jimmy. Window channel and sweeper kit. Glass run channels and inner and outer sweepers. Front doors. 6-piece set.	WC 5900-17
'82-'94	Chevy S10 Blazer, Pickup. Right outer sweeper. 31-3/8 in. long. Each.	WC 83-007
'82-'94	Chevy S10 Blazer, Pickup. Left outer sweeper. 31-3/8 in. long. Each.	WC 83-008
'82-'94	Chevy/GMC full-size trucks, Blazer, Bravada, Jimmy, S10, S15. Window sweeper kit. Inner and outer sweepers. 4-piece set.	WC 5900-21

Chevy/GMC Window Channels & Sweepers

 <p>IS-WC 5900-22</p>	 <p>72" WC 18-72</p>	 <p>72" WC 25-72</p>	 <p>72" WC 26-72</p>
 <p>72" WC 29-72</p>	 <p>96" WC 33-96</p>	 <p>60" WC 40-60</p>	 <p>WC 59</p>
 <p>WC 83-007</p>	 <p>WC 83-008</p>	 <p>WC 5900-15</p>	 <p>WC 5900-20</p>

Why Not Do It Right the First Time?



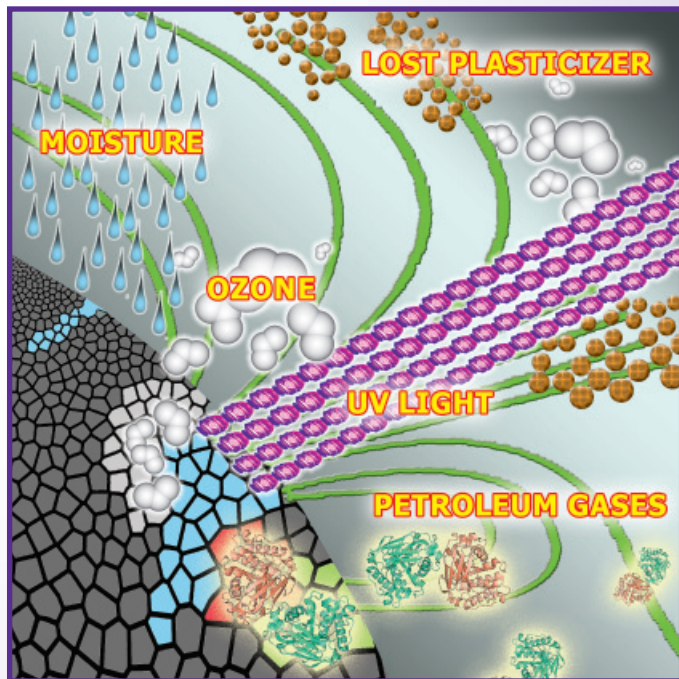
Consider what it costs you in time, money and aggravation to do something over. When you consider how much time and effort you've already invested in your restoration project, does it make sense to skimp on the rubber? There's cheap stuff out there. The difference in cost between theirs and ours is a few dollars per set of seals. But what does it cost you in the long run to buy cheap? Drilling holes ... replacing broken pins ... adjusting and re-adjusting doors and windows. Not to mention replacing the seals in a few years when they fail. And they will fail. Don't settle for less! Find out what you are getting for your money and **ASK FOR METRO QUALITY!** You'll be glad you did. **There Truly is a Visible Difference ...**

DODGE TRUCKS & VANS

'64-'67	D100-D300, W100-W300. Upper and lower rigid division bar channel. With stainless steel bead, pile lining and heavy steel core. 72 in. piece. Each.	WC 29-72
'65-'67	D100-D300, W100-W300, Town & Country. Flexible glass-run channel. 96 in. piece. Each.	WC 33-96
'74-'79	D50 ('79), D100, D150 ('77-'79), D200, D300, D400-D450 ('78-'79), W100 ('74-'77), W150 ('77-'79), W200, W300. Window sweeper kit. 6-piece set.	WC 7900-10
'80-'97	B100-B300 ('80), B150-B350 ('81-'94), B1500-B3500 ('95-'97). Window sweeper kit. 8-piece set includes two upper glass run channels, two glass channel division bar/liners, two outer belt-line weatherstrips (driver side and passenger side), and two inner belt-line weatherstrips (driver side and passenger side).	WC 7900-13

What Makes Metro's Rubber ...

Four agents are most active in causing rubber to age and fail: UV light, ozone, chemical aromatics (e.g., petroleum gases) and moisture. Our Microcell Technology™ creates a closed-cell sponge that resists intrusion from moisture and gases. In addition, Metro Moulded Parts, Inc. is the **only** manufacturer of automotive restoration rubber parts who uses specially formulated rubber compounds specifically designed to resist the damaging effects of ozone and UV light. We include no accelerants in the molding process, which causes rubber parts to age and fail prematurely. We use only the highest grades of virgin rubber in all our parts. We add no bulk fillers of any kind that can weaken the part. Get the facts and you'll find out – **there Truly is a Visible Difference!**



... the World's Most Advanced?

Questions? Ask for Technical Assistance ...

We'll be glad to help! 1-800-878-2237

FORD TRUCKS & VANS

'52-'56	F-Series trucks. Upper and lower rigid division bar channel. With stainless-steel bead, pile lining and heavy steel core. 72 in. piece. Each.	WC 29-72
'52-'60	F-Series trucks ('52-'59), F-100 - F-350 ('60). Flexible window sweeper. With stainless-steel bead. 96 in. piece. Each.	WC 7-96
'57-'67	F-Series trucks ('57-'59), F-100 - F-350 ('60-'67). Rigid division bar channel. With stainless-steel bead, heavy steel core and pile lining. 96 in. piece. Each.	WC 28-96
'63-'64	F-100 - F-350. Flexible glass run channel. Flocked. For vehicles without framed side glass. 60 in. piece. Each.	WC 40-60
'66-'72	Bronco. Window sweeper kit. Inner and outer sweepers. 4-piece kit.	WC 6600-10
'75-'80	E-100 - E-350 Econoline van. Window channel and sweeper kit. Glass run channels and inner and outer sweepers. 6-piece kit.	WC 6600-14
'80-'86	F-100 ('80-'83), F-150 - F-350. Window channel and sweeper kit. Glass run channels and inner and outer sweepers. 6-piece kit.	WC 6600-12
'80-'97	Bronco ('80-'96), F-100 ('80-'83), F-150 - F-350, F-450. Flocked window channel seal. Imported. Fits either side. Each.	IS-WC 6600-23
'81-'84	E-100 ('81-'83), E150 - E-350 Econoline van. Window channel and sweeper kit. Glass run channels and inner and outer sweepers. 6-piece kit.	WC 6600-15
'84-'91	E-150 - E-350 Econoline van. Window channel and sweeper kit. Glass run channels and inner and outer sweepers. 6-piece kit.	WC 6600-16
'87-'96	F-150 - F-350. Window channel and sweeper kit. Glass run channels and inner and outer sweepers. 6-piece kit.	WC 6600-13

Look for Metro's Show-winning Detail...



IS-WC 6600-23



WC 6600-13

... in Every Part We Make !!!

Frame & Chassis Parts!

CHEVY/GMC TRUCKS

'37-'71	Chevy/GMC full-size trucks, many models. Shock absorber grommet. 1 in. bottom OD; 5/8 in. ID x 5/8 in. high.	BN 10
'49-'62	Chevy pickup ('49-'60), C10-C30 ('61-'62), K10-K20 ('61-'62). Shock absorber grommet. 1 in. bottom OD, 5/8 in. high, with 3/8 in. ID. Each.	BN 13
'50-'62	Chevy pickup ('50-'60), C10-C30 ('61-'62), K10-K20 ('61-'62). Shock absorber grommet. 1 in. bottom OD, 3/4 in. high, with 5/8 in. ID. Each.	BN 11
'53-'64	Chevy pickup ('53-'60), C10-C30 ('61-'64), K10-K20 ('61-'64). Shock absorber grommet. 1 in. bottom OD, 7/8 in. high, with 7/16 in. ID. Each.	BN 1
'55-'62	Chevy pickup ('55-'60), C20-C30 ('61-'62), K20 ('61-'62). Small front cushion. Four used per vehicle. Replaces OEM# 3714358. Each.	MM 7
'55-'62	Chevy pickup ('55-'60), C20-C30 ('61-'62), K20 ('61-'62). Large front cushion. Four used per vehicle. Replaces OEM# 3714357. Each.	MM 7-A
'55-'62	Chevy/GMC full-size trucks, many models. Rear lower motor mount. Two used per vehicle. Replaces OEM# 3789949. Each.	MM 20-A
'55-'69	Chevy/GMC full-size trucks, many models. Driveshaft support cushion. 5-3/8 in. high, with 1-1/2 in. center driveshaft hole. Each.	BN 38
'55-'69	Chevy/GMC full-size trucks, many models. Driveshaft support cushion. 6 in. high, with 1-3/4 in. center driveshaft hole. Each.	BN 40
'55-'72	Chevy/GMC full-size trucks, many models. Driveshaft support cushion. 3-5/8 in. OD, 1-3/8 in. ID, 2-1/8 in. wide. Each.	BN 48
'58-'64	Chevy pickup ('58-'60), C10-C20 ('61-'64), K10-K20 ('61-'64). Driveshaft cushion. 3-7/8 in. wide x 5-1/2 in. high with 2 in. hole. Check dimensions before ordering. Each.	BN 33
'58-'64	Chevy pickup ('58-'60), C10-C20 ('61-'64), K10-K20 ('61-'64). Driveshaft cushion. 4 in. wide x 5-5/8 in. high, with 1-1/4 in. ID. Includes bearing, screws and washer. Each.	BN 34
'58-'64	Chevy pickup ('58-'60), C10-C20 ('61-'64), K10-K20 ('61-'64). Driveshaft cushion. 2-7/16 in. OD, 1-1/4 in. ID, 1/2 in. wide. Each.	BN 50
'58-'69	Chevy/GMC full-size trucks, many models. Driveshaft support cushion. 5 in. high, with 1-1/2 in. center driveshaft hole. Each.	BN 35
'64-'66	C10-C30, K10-K30. Rear body cushion kit. Uses two kits per truck. Replaces OEM# 39578292. 3-piece set.	BCK 102
'64-'66	C10-C30, K10-K20. Body cushion kit. 6-piece set.	BCK 202
'67-'72	C10-C30, K10-K30. Rear body cushion kit. Uses two kits per truck. Replaces OEM# 3974348. 3-piece set.	BCK 103
'67-'72	C10-C30, K10-K20. Body cushion kit. 10-piece set.	BCK 203
'69-'70	C10-C30, K10-K30. Front body cushion kit. Uses two kits per truck. Replaces OEM# 3957830. 3-piece set.	BCK 101

Chevy/GMC Frame & Chassis Parts

 <p>BCK 101</p>	 <p>BCK 102</p>	 <p>BCK 103</p>	 <p>BCK 202</p>
 <p>BCK 203</p>	 <p>BN 1</p>	 <p>BN 10</p>	 <p>BN 11</p>
 <p>BN 13</p>		 <p>BN 33</p>	
 <p>BN 34</p>	 <p>BN 35</p>	 <p>BN 38</p>	 <p>BN 40</p>
 <p>BN 48</p>	 <p>BN 50</p>	 <p>MM 7, MM 7-A</p>	 <p>MM 20-A</p>

Frame & Chassis Parts (Cont.)

FORD TRUCKS & VANS

'48-'66	F-series trucks ('48-'59), F-100 - F-350 ('60-'66). Shock absorber grommet. 1 in. bottom OD, 3/4 in. high, with 5/8 in. ID. Each.	BN 11
'61-'64	F-100 - F-350. Shock absorber grommet. 1 in. bottom OD, 1-7/16 in. high, with 5/8 in. ID. Each.	BN 3
'61-'65	Econoline. Spring and shackle bushing. 1 in. bottom OD x 1-5/8 in. high, with 9/16 in. ID. Each.	BN 20
'65-'69	F-100 - F-350. Driveshaft support cushion. 4 in. OD, 1-1/2 in. ID, 2-1/8 in. wide. Each.	BN 44
'65-'69	F-100 - F-350. Driveshaft support cushion. 3-15/16 in. OD, 1-1/2 in. ID, 2 in. wide. Each.	BN 45
'66	Bronco. Hood adjustment bumper. 1-1/8 in. dia. rubber head; 5/16 in. thk x 18 thd/in. x 2-1/8 in. long bolt. Each.	HA 3
'66-'67	Bronco. Shock absorber grommet. 1-1/4 in. bottom OD, 1 in. high, with 3/4 in. ID. Each.	BN 12
'66-'77	Bronco. Body cushion. 2-5/16 in. OD, 15/16 in. ID, 3/4 in. thk. Each.	BC 6
'66-'77	Bronco. Body cushion. 2-9/16 in. OD, 3/4 in. ID, 13/16 in. thk. Each.	BC 6-A

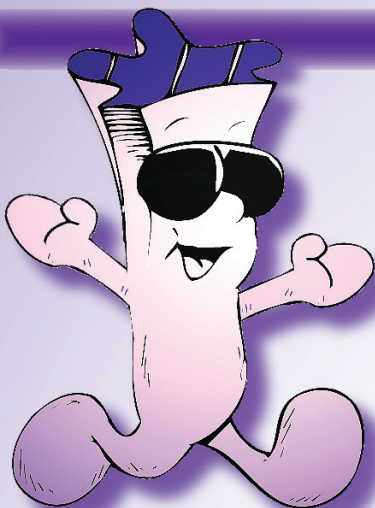
Ford Frame & Chassis Parts



DODGE TRUCKS & VANS

'68-'71	P100 ('68), P200, P300, P375 ('68), PB100-PB300 ('74). Spring and shackle bushing. 1 in. bottom OD x 1-5/8 in. high, with 9/16 in. ID. Each.	BN 20
'72	W100-W300. Shock absorber grommet. 1-1/4 in. bottom OD, 1 in. high, with 3/4 in. ID. Each.	BN 8
'72	D100-D300. Front stabilizer end repair kit. 22-piece set for two stabilizer bars. Contains all rubber bushings, washers, bolts and nuts required for one front end. Kit.	BNK 25

Body & Interior Parts




"Complete your restoration with the interior detail and body parts that make your truck look new again. Protect your wiring with fresh new firewall grommets!!"

CHEVY TRUCKS & VANS

'55-'70	Chevy/GMC full-size trucks, many models. Clutch and brake pedal pad. Perfect reproduction. 2-5/8 in. wide x 3-3/4 in. long. Each.	CB 100-EACH
'55-'70	Chevy/GMC full-size trucks, many models. Clutch and brake pedal pads. Perfect reproduction. 2-5/8 in. wide x 3-3/4 in. long. Pair.	CB 100-PAIR
'60-'69	Chevy/GMC full-size trucks, many models. Door lock-rod ferrule. Polished stainless steel with felt insert. Fits hole size of 1/2 in. x 13/16 in. OD. Each.	RP 303-E
'60-'71	Chevy pickup ('60), C10-C30 ('61-'71), K10-K20 ('61-'71), K30 ('68-'71). Clutch and brake pedal pads. 3-3/4 in. wide x 2-5/8 in. long. Pair.	CB 101-B
'60-'72	Chevy/GMC full-size trucks, Blazer ('69-72), Jimmy ('69-'72). Door panel insulation kit. 3/8 in. round sponge rubber windlace. Two pieces, each 5 ft. long. Enough for two doors.	LPK 44-T
'65-'69	C10-C30, G10-G20, K10-K30, P10-P30. Dash and firewall grommet. Double-hole type for two wires. Each.	SM 101-A
'67-'70	Chevy/GMC full-size trucks, many models. Hood side bumper. Top opening 5/8 in. wide. Each.	HF 32-A
'67-'72	Chevy/GMC full-size trucks, many models. Backup (cargo) light gasket. Each.	MB 2002
'67-'72	C10-C30, K10-K30. Door handle pads. 3-1/8 in. long and 1 in. long. 4-piece set.	MP 547-J
'67-'72	Chevy/GMC full-size trucks and vans, many models. Dash/firewall grommet. Double-hole type for two wires. For heater motor and accessory wires. 15/16 in. OD, fits 5/8 in. sheet metal hole. Each.	RP 1-G
'67-'72	C10-C30, G10-G30, K10-K30, P10-P30. Dash and firewall grommet. Single-hole type for one wire. Each.	SM 101
'67-'72	C10-C30, K10-K30. Clutch pedal bumper. 5/8 in. x 7/8 in. x 9/16 in. high. Each.	RP 30-C
'67-'72	C10-C30, C15-C3500, K10-K30, K15-K3500. Heater box to firewall gasket. Each.	RP 300-T
'68	C10 pickup. Gas filler tube grommet. Perfect reproduction. Top 2-1/16 in. ID, 3-7/16 in. OD. Each.	GF 45
'73-'98	Chevy full-size trucks, many models. Mud flaps. High quality, heavy duty black rubber. 12 x 17 in. Pair.	AC 302
'73-'98	GMC full-size trucks, many models. Mud flaps. High quality, heavy duty black rubber. 12 x 17 in. Pair.	AC 303

Chevy/GMC Body & Interior Parts

 <p>AC 302</p>	 <p>AC 303</p>	 <p>CB 100-EACH</p>	 <p>CB 100-PAIR</p>
 <p>CB 101-B</p>	 <p>GF 45</p>	 <p>HF 32-A</p>	 <p>MB 2002</p>
 <p>MP 547-J</p>			 <p>RP 1-G</p>
 <p>RP 30-C</p>	 <p>RP 300-T</p>	 <p>RP 303-E</p>	 <p>SM 101, SM 101-A</p>



Fast Fact: *The various dense rubber parts used on an vehicle (e.g., body cushions, tail-light gaskets, vent-window seals, door seals, etc.) all have different properties such as hardness, surface texture and tractability needed to work properly. Some manufacturers use a low-cost, generic rubber compound for all their dense rubber parts, regardless of the application. At Metro, we use only rubber compounds that are specifically formulated for the part application. We use no bulk fillers that can weaken the part and no accelerants during molding that cause parts to age prematurely. Get the facts and you'll find out ... **There truly is a Visible Difference ...***

FORD TRUCKS & VANS

'59-'63	F-series truck ('59), F-100 - F-350 ('60-'63). Door handle pads. 2-3/4 in. long & 1-3/8 in. long. Set.	MP 739-A
'60-'83	F-series trucks, Econoline ('68-'98). Accessory floor mat. Dense black rubber with molded original emblem. Also designed to be sewn into new carpet. 12 in. x 17 in. Each	AC 33
'61-'64	Econoline. Door lock-button grommet. White nylon. 5/8 in. OD, 7/16 in. ID. Each.	RP 303-K
'61-'66	F-100 - F-350. Door handle scratch guard pads. Replaces OEM# C3TB122418/19-A. 3-3/4 in. wide x 8-3/4 in. long. Pair.	MP 739-D
'61-'66	F-100 - F-350. Antennae base pad. 1-5/8 in. wide x 2-1/8 in. long. Each.	MP 800-G
'64-'76	Bronco ('66-'76), E-100 - E-300 ('68-'74), Econoline ('64-'67), F-100 - F-350 ('64-'73). Clutch and brake pedal pads. 3-1/4 in. wide x 2-1/4 in. long. Pair.	CB 111
'66-'77	Bronco. Vulcanized windshield seal. For models without chrome garnish on windshield. Each.	VWS 3390
'74	E-100 - E-300, F-100 - F-150. Window crank-handle knob. With attaching parts. Clear. Each.	RP 400-B



AC 33



CB 111



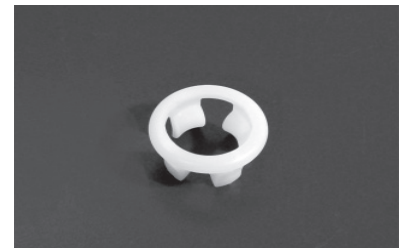
MP 739-A



MP 739-D



MP 800-G



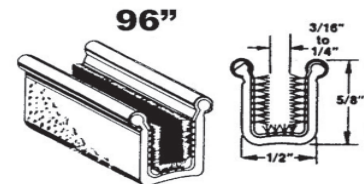
RP 303-K



RP 400-B



VWS 3390



WC 28-96

Miscellaneous Restoration Parts!

 <p>IS-MW 10052</p>	 <p>IS-MW 10053</p>	 <p>MW 10000</p>
 <p>MW 10040</p>	 <p>MW 10041</p>	 <p>MW 10050</p>
 <p>MW 10062</p>	 <p>LP 111-X</p>	 <p>PK 161</p>

Ball joint dust boot. 1/2 in. shaft. Each.

Tie rod dust boot. 9/16 in. shaft. Each.

Spoiler trim. Fits over edge of sheet metal or fiberglass. Per foot.

Gas filler splash shield. Universal. Fits around filler neck to protect paint by preventing gas from dripping onto body panels during fill-up. Each.

Vacuum caps. 2-1/8 in., 2-1/4 in., 2-3/8 in. 2-1/2 in. long. 2 each / 8-piece set.

Sheet metal grommet assortment. Set

- two 3/16 in. ID, 5/16 in. OD.
- two 5/16 in. ID, 5/8 in. OD.
- two 3/8 in. ID, 1/2 in. OD.
- one 7/16 in. ID, 9/16 in. OD.
- one 5/8 in. ID, 3/4 in. OD.

Coil-spring boosters. Rear. 2-1/2 in. heavy duty. Set of two.

Coil-spring boosters. Front. 1 or 1-1/2 in. heavy duty. Set of four.

Universal gasket material. Unbeaded sheet rubber and cork. Three pieces. Kit.

IS-MW 10052

IS-MW 10053

LP 111-X

MW 10000

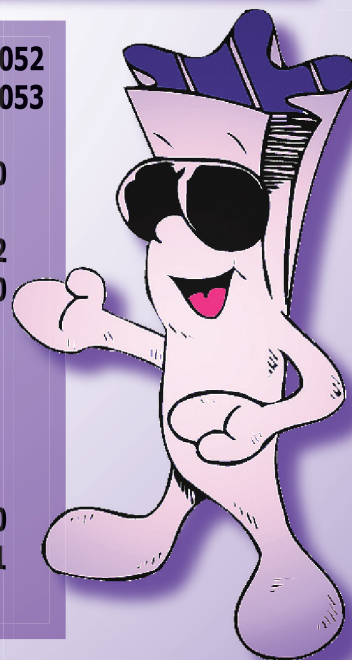
MW 10062

MW 10050

MW 10040

MW 10041

PK 161



YOUR GUARANTEE OF SATISFACTION

Founded in 1918, Metro Moulded Parts, Inc. is the leading USA manufacturer of top quality molded detail rubber parts and sponge rubber weatherstripping for antique, classic and restoration cars and trucks.

Compare Metro's products to any of our competitors' products and you'll quickly see and feel which product is superior in looks, performance and durability. Try it yourself! You'll see that we don't cut corners when we make an OEM replacement rubber part for your cherished car or truck.

In fact, we take extra care to ensure an identical match to the OEM original, right down to including non-functional details that aren't even visible when the part is installed! Among dozens of small details that contribute to the total quality of the part, at Metro going the extra mile includes hot-splicing component pieces, hand-trimming difficult parts, using the same type of mounting pins and metal cores as the OEM original, and three separate quality control checks during fabrication.

Our pledge is simple: every product we sell must meet our own demanding quality standards. At the root of these standards is this simple test – **if we wouldn't want to put it on our car, we wouldn't want you to put it on yours.** On that, there is no compromise.

You can be proud to use Metro products because we offer the best quality backed by the best guarantee in the business. So insist on Metro quality. And ask for Metro products by name!



Metro SUPERsoft® brand Sponge Rubber – The brand chosen by professional automobile restorers for many years, Metro SUPERsoft® EPDM sponge rubber delivers on its name! It's up to 30% softer than other brands while performing far better than competitive products and lasting years longer.

Due to its unmatched softness and pliability, SUPERsoft® brand sponge rubber weatherstrip and seals are easier to install and fit better than other products. **You won't have to slam your doors or trunk with SUPERsoft® Sponge weatherstrip installed on your car!** SUPERsoft® brand sponge is also the **best looking weatherstrip available** anywhere with a high gloss, smooth black skin that gives a refined Concours appearance. In addition, SUPERsoft® brand sponge rubber provides extraordinary resistance to hardening and decay caused by exposure to ozone and UV light. All Metro products are fabricated from the highest grades of virgin rubber using state-of-the-art, computerized mold-making techniques. These are just a few of the reasons why we can offer an exclusive, **15-year full replacement warranty** on every SUPERsoft® brand sponge rubber part we make and stand behind it with complete confidence. SUPERsoft® brand sponge rubber parts simply have no comparisons.



Metro Legacy PolymersSM brand Dense Rubber – Designed to outlast ordinary dense and solid rubber compounds, the Legacy PolymersSM brand represents a family of advanced rubber formulations and production techniques

developed over decades. Every Legacy PolymerSM rubber compound meets strict production specifications and fabrication guidelines to produce detail rubber parts and components that will *outlast* and *outperform* other solid rubber parts. Legacy PolymersSM compounds contain only virgin rubber, with none of the fillers or accelerators that cause other brands of dense and solid rubber parts to prematurely age and fail. Legacy PolymersSM compounds have additives that provide ozone and UV protection to resist these agents of decay. Our advanced rubber formulations are targeted to the specific applications. These features, along with our advanced computer controls and vulcanization processes, produce long-life solid rubber parts that are truly in a class by themselves.



Import SelectSM – While the vast majority of our customers prefer the highest quality American-made parts for their restored American cars and trucks, Metro offers a limited selection of foreign-made parts for price sensitive users. Of the many parts available from foreign suppliers, *we have carefully*

selected only the very best for our Import SelectSM product line. Some imported parts are inferior reproductions of the OEM originals they are designed to replace. Besides missing details, they may be fabricated from inferior grades of rubber or use cheap, metal cores and obsolete fabrication processes. At Metro Moulded Parts, we buy only from primary manufacturers and control the materials and processes used in production. We offer only those imported parts that meet our high quality standards.

METRO
Moulded Parts Inc.

**Top Quality Restoration and Replacement
Rubber Parts from the Makers of...**



Metro Moulded Parts, Inc.

11610 Jay Street, Minneapolis, MN 55448 - USA

toll-free: 1-800-878-2237 toll-free fax: 1-877-399-2562 phone: 763-757-0310

www.metrommp.com